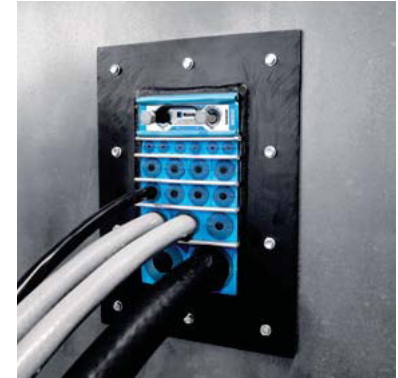
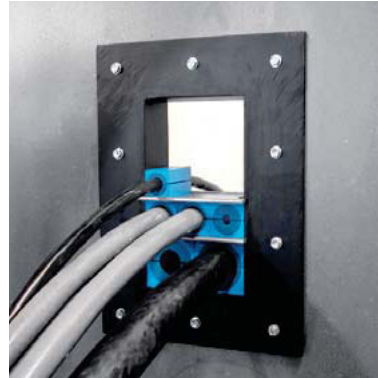


# Roxtec GHM frame



**EN** The Roxtec GHM frame is designed for installation through bolting where welding is not suitable. The frame is sealed onto the structure by use of TSL sealing strip.

- For use with Group RM components
- Attachment by bolting
- Drilled according to standardized hole pattern

**ES** El marco GHM de Roxtec está diseñado para que se pueda instalar con tornillos cuando no es posible recurrir a la soldadura. El marco se sella a la estructura usando la tira de sellado TSL.

- Uso con componentes del grupo RM
- Adhesión por atornilladura
- Huecos perforados con patrón predefinido de agujeros

**CN** Roxtec GHM 框架设计为在无法实施焊接安装的环境下，通过螺栓固定安装。使用 TSL 密封带将框架密封到结构上。

- 适用于RM组件
- 螺栓安装
- 标准孔径结构打孔

**FR** Le cadre GHM Roxtec est conçu pour les installations où le soudage n'est pas conseillé. Le cadre est fixé à la structure à l'aide d'une bande d'étanchéité TSL.

- Pour composants du Groupe RM
- Fixation par boulonnage
- Pré-percé selon un schéma de trous prédéfinis

**DE** Der Roxtec GHM-Rahmen ist für die Schraubmontage geeignet in Fällen, wo Schweißen vermieden werden soll. Der Rahmen wird gegen die Wand mithilfe eines TSL-Dichtstreifens abgedichtet.

- Zur Verwendung mit Komponenten der Gruppe RM
- Schraubmontage
- Vorgebohrt mit festem Lochmuster

# GHM frames, primed, mild steel

GHM型框架, 优质低碳钢 | GHM-Rahmen, grundierter Baustahl | Marco GHM en acero dulce imprimado | Cadres GHM, acier doux peint



GHM 6x1 primed

Parts needed for a complete solution



page 25



page 157



page 160



page 165

See also Installation guidelines on page 189.

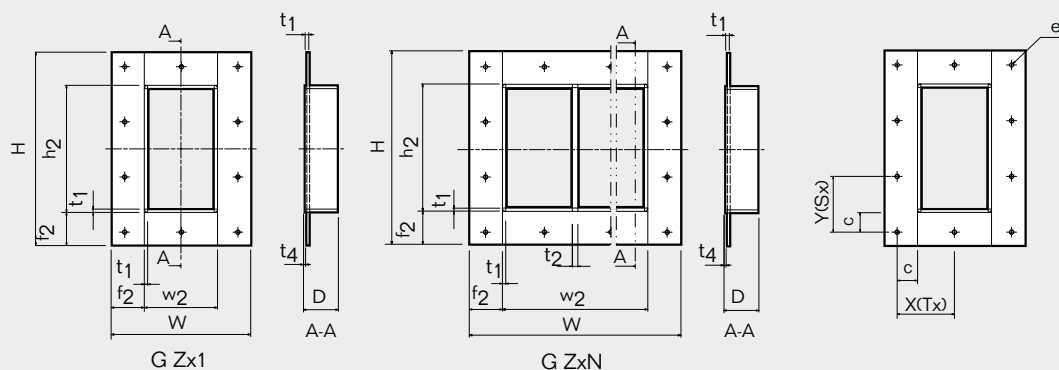
For information about other frame combinations that are not presented, please contact your local Roxtec supplier or e-mail: [info@roxtec.com](mailto:info@roxtec.com)

<b>RATINGS</b>	<b>Fire:</b> A-Class	<b>Water pressure:</b> 3 bar	<b>Gas pressure:</b> 1.5 bar
----------------	----------------------	------------------------------	------------------------------

CN	框架	框架开孔数量	密封空间 (毫米)	外部尺寸 (D=60 毫米)		重量		货号
				HxW (毫米)	HxW (英寸)	(千克)	(磅)	
DE	Rahmen	Rahmenöffnungen	Belegraum (mm)	Außenmaße (D=60 mm)		Gewicht		Art.-Nr.
ES	Marco	Aberturas del marco	Espacio útil de sellado (mm)	Dim. externas (D=60 mm)		Peso		
FR	Cadre	Nombre d'alvéoles	Espace de remplissage (mm)	Dim. extérieures (D=60 mm)		Poids		N° d'article
EN	Frame	Frame openings	Packing space (mm)	External dimensions (D=60 mm)		Weight		
				HxW (mm)	HxW (in)	(kg)	(lb)	Art. No.
	<b>GHM 2x1 primed</b>	1	60 x 120	233 x 253	9.173 x 9.961	3.4	7.562	<b>GHM2000000112</b>
	<b>GHM 2x2 primed</b>	2	60 x 120	233 x 383	9.173 x 15.079	5.4	11.905	<b>GHM2000000212</b>
	<b>GHM 2x3 primed</b>	3	60 x 120	233 x 514	9.173 x 20.236	7.4	16.218	<b>GHM2000000312</b>
	<b>GHM 4x1 primed</b>	1	120 x 120	292 x 253	11.496 x 9.961	4.1	9.039	<b>GHM4000000112</b>
	<b>GHM 4x2 primed</b>	2	120 x 120	292 x 383	11.496 x 15.079	6.3	13.977	<b>GHM4000000212</b>
	<b>GHM 4x3 primed</b>	3	120 x 120	292 x 514	11.496 x 20.236	8.6	18.938	<b>GHM4000000312</b>
	<b>GHM 6x1 primed</b>	1	180 x 120	350 x 253	13.780 x 9.961	4.8	10.516	<b>GHM6000000112</b>
	<b>GHM 6x2 primed</b>	2	180 x 120	350 x 383	13.780 x 15.079	7.3	16.072	<b>GHM6000000212</b>
	<b>GHM 6x3 primed</b>	3	180 x 120	350 x 514	13.780 x 20.236	9.8	21.627	<b>GHM6000000312</b>

# GHM frames, technical information

GHM型框架, 技术信息 | GHM-Rahmen, technische Daten | Marco GHM, información técnica |  
Cadres GHM, informations techniques



**Hole pattern** / 孔径 / Lochmuster / Diseño del hueco /  
Modèle de perçage

Pos	(mm)	(in)
h <sub>2</sub>	H - 120	H - 4.724
w <sub>2</sub>	W - 120	W - 4.724
D	60	2.362
f <sub>2</sub>	60	2.362
t <sub>1</sub>	6	0.263
t <sub>2</sub>	10	0.394
t <sub>3</sub>	12	0.394
t <sub>4</sub>	3	0.118
e	10	0.394
c	35	1.378

	X(Tx)		
	X(mm)	X(in)	T
GHM 2x1	101.3	3.988	2
GHM 2x2	111	4.370	3
GHM 2x3	92.7	3.650	5
GHM 4x1	101.3	3.988	2
GHM 4x2	111	4.370	3
GHM 4x3	92.7	3.650	5
GHM 6x1	101.3	3.988	2
GHM 6x2	111	4.370	3
GHM 6x3	92.7	3.650	5

	Y(Sx)		
	Y(mm)	Y(in)	S
GHM 2x1	91.5	3.602	2
GHM 2x2	91.5	3.602	2
GHM 2x3	91.5	3.602	2
GHM 4x1	80.5	3.169	3
GHM 4x2	80.5	3.169	3
GHM 4x3	80.5	3.169	3
GHM 6x1	75	2.953	4
GHM 6x2	75	2.953	4
GHM 6x3	75	2.953	4

Z = Frame size  
N = Number of horizontal openings

Z = 框架型号  
N = 水平方向的开孔数量

Z = Rahmengröße  
N = Anzahl horizontaler Öffnungen

Z = Tamaño del marco  
N = Número de aberturas en sentido horizontal

Z = Taille du cadre  
N = Nombre d'alvéoles horizontales

Note: All dimensions are nominal values

注意: 所有的尺寸都是参考值

Achtung: Alle angegebenen Maße sind Nominalwerte

Nota: Todas las dimensiones son valores nominales

N.B.: toutes les dimensions sont nominales